

SHUTTLEWAGON
MOBILE RAILCAR MOVERS



DIESEL FAMILY
Move more railcars safely.

shuttlewagon.com

SHUTTLEWAGON



Shuttlewagon

The most powerful and reliable railcar movers in the industry.

- Models & Specifications..... 4*
- Rubber-Tire Drive..... 5*
- Performance & Savings 6*
- Advantages..... 7*
- Standard Features 8*
- Optional Features..... 9*
- Shuttle-Sync..... 10*
- Shuttle Track 12*
- The Safer Choice 13*
- Parts 14*
- Service 15*

EST. 1972

Models & Specifications

Fostering innovation into real world practical railcar handling solutions.



SHUTTLEWAGON
COMMANDER
UP TO **31** LOADED RAILCARS

The New Commander NXT Series shares many of the same features as the larger Navigator but comes in a smaller package. Equipped with the latest technology for maximum operator comfort and safety.

SPECIFICATIONS	NXT318	NXT423	NXT527	NXT631
WEIGHT	44,300 lbs	49,500 lbs	54,900 lbs	61,000 lbs
LENGTH (To end of couplers)	274"	274"	274"	274"
WIDTH	102"	102"	102"	102"
TRACTIVE EFFORT	26,400 lbs	31,200 lbs	36,000 lbs	41,300 lbs



SHUTTLEWAGON
NAVIGATOR
UP TO **40** LOADED RAILCARS

The Navigator Series incorporates the most power and advanced technologies available to ensure safety and reliability are never compromised.

SPECIFICATIONS	NVX5025	NVX6030	NVX7035	NVX8040
WEIGHT	61,000 lbs	67,000 lbs	73,000 lbs	101,000 lbs
LENGTH (To end of couplers)	296"	296"	296"	296"
WIDTH	120"	120"	120"	120"
TRACTIVE EFFORT	38,000 lbs	45,000 lbs	50,000 lbs	60,000 lbs

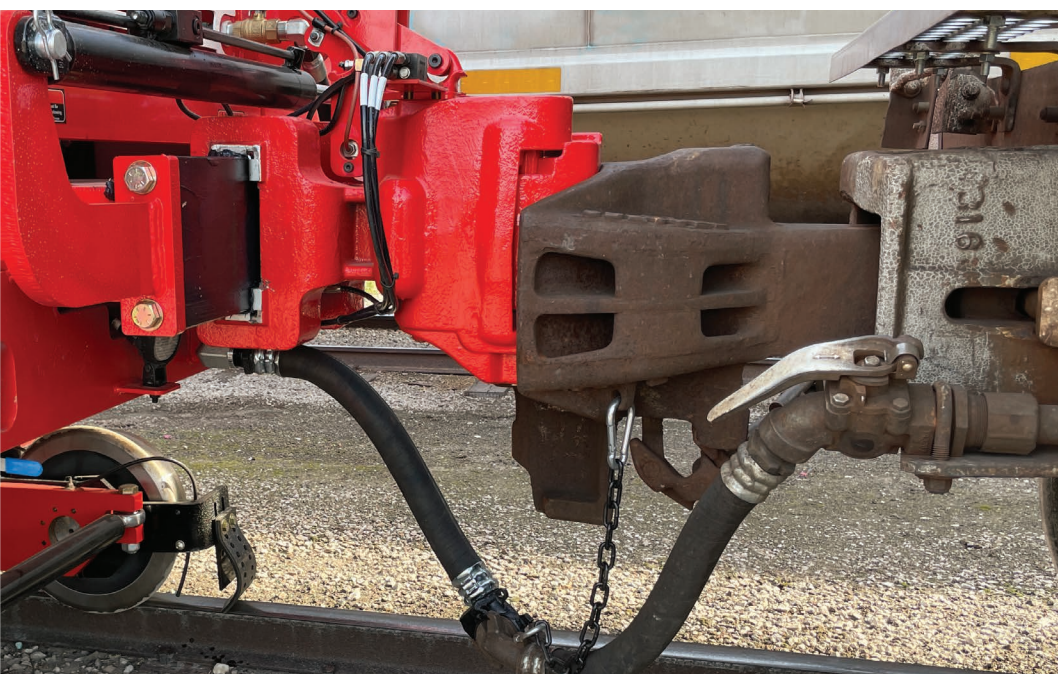


Rubber-Tire Drive ***Better traction than a steel wheel***

Unlike a weight transfer machine with complicated hydraulics, Shuttlewagon rides on rubber tires and is guided by steel wheels. As a result, Shuttlewagon reduces vibration and rides smoother while extending component life and increasing operator comfort.

Couple into our industry standard locomotive style AAR coupler and connect the air hose. Within seconds, you are moving railcars with controlled precision and without the loss of pulling capacity or weight when coupled directly to an empty railcar.

- ////////////////////////////////////
- *No lifting up the railcars to borrow weight*
 - *No double-coupling required to maximize tractive effort*
 - *No reduction in pulling capacity when coupled to an empty car*



Performance & Savings

Revolutionize your operations, maximize efficiency, and minimize expenditure with our state-of-the-art railcar moving solutions.

SHUTTLEWAGON

NON-WEIGHT TRANSFER

Does not borrow weight from rail car.
Tractive Effort (lbs) when directly coupled to:

MODELS	LOADED RAILCAR	EMPTY RAILCAR	PASSENGER RAILCAR
NXT318	26,400 lbs	26,400 lbs	26,400 lbs
NXT423	31,400 lbs	31,200 lbs	31,400 lbs
NXT527	37,100 lbs	36,000 lbs	37,100 lbs
NXT631	41,300 lbs	41,300 lbs	41,300 lbs
NVX 5025	38,000 lbs	38,000 lbs	38,000 lbs
NVX 6030	45,000 lbs	45,000 lbs	45,000 lbs
NVX 7035	50,000 lbs	50,000 lbs	50,000 lbs
NVX 8040	60,000 lbs	60,000 lbs	60,000 lbs

LOCOMOTIVE

NON-WEIGHT TRANSFER

Does not borrow weight from rail car.
Estimated locomotive equivalent scale:

TRACTIVE EFFORT BY LOCOMOTIVE WEIGHT
45 Ton = 27,000 lbs
50 Ton = 30,000 lbs
55 Ton = 35,000 lbs
N/A
63 Ton = 38,000 lbs
75 Ton = 45,000 lbs
83 Ton = 50,000 lbs
100 Ton = 60,000 lbs

COMPETITORS

WEIGHT TRANSFER

Less weight to borrow = Less tractive effort.
Estimated tractive effort when coupled to:

LOADED RAILCAR	EMPTY RAILCAR	PASSENGER RAILCAR
27,000 lbs	15,000 lbs	18,500 lbs
30,000 lbs	16,000 lbs	19,500 lbs
33,000 lbs	20,500 lbs	24,200 lbs
N/A	N/A	N/A
N/A	N/A	N/A
44,000 lbs	31,500 lbs	35,000 lbs
N/A	N/A	N/A
N/A	N/A	N/A

Shuttlewagon Advantages

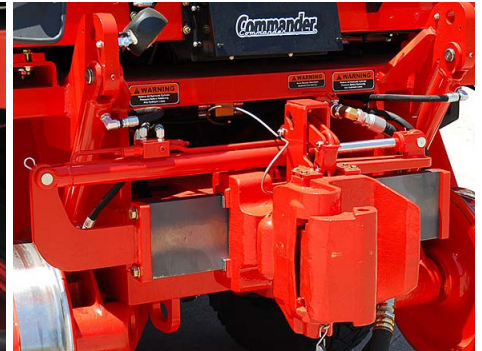
The right choice for your current railcar moving solution today.

- Average Fuel Consumption - 1.8 gallons per hour
- No need to idle in cold temperatures, further reducing fuel consumption
- Low cost Planned Maintenance programs
- Local parts availability and field technicians
- More road clearance
- Versatile - Converts from rail to road, allowing for coupling to front, rear, or center of the train for more efficient switching
- Tier 4 Cummins Engine on SWX and NVX models - No idling, no stack. burn-offs and reduced emissions
- Cummins Stage 5 Diesel engine on NVX models
- Four wheel drive available in off-road mode
- Infinite Range Train Air Brakes for maximum brake control
- Service Safety - No heavy "weight transfer" coupler beams or folding tires creating dangerous pinch points
- Derail Prevention – No lifting rail car off the center pin
- True 360° Visibility with or without cameras
- Operator Safety - No cramped space for operators connecting train air hoses
- Training - Included with every machine

Shuttlewagon delivers greater value in performance and cost savings regardless of your current railcar moving solution today.

Standard Features

For all our SWX Commander and NVX Navigator models.



- 180-degree rotating console with a multifunction display.
- Dual four-way air suspension seats for operation from either side of cab when in rail mode.
- Air-knife adverse weather rail drying system.
- Anti-lock braking system.
- Dynamic traction control.
- Pull out sander boxes with wide mouth lids for easy loading. Air activated sanders for smooth dispensing.
- Two air ride operator seats.

- Exterior mounted cameras and cab monitor to view couplers & rail wheels.
- Wide range AAR sliding couplers are air released and hydraulically positioned to improve pulling performance on curves and grades.
- Full width cab with rotating operator console.
- 90 Gallon fuel tank.
- Shuttle Watch shock monitoring sensor.
- Powerful air-knife increases capacities up to 50% in adverse weather.

Optional Features

Get the most out of your Shuttlewagon with these available options.

Safety Options

- Air Bell
- Remote Spotlight
- Extended Lights Package
- Idle Shutdown
- Surround Camera System
- 360 Degree Perimeter Camera Package
- Line-of-Sight Camera Package
- Digital Video Recorder
- Vigilance System
- Shock Impact Monitoring
- Smart Start Keypad System

Paint Options

- Custom Colors and Logos
- Corrosion Resistance Clear Coat
- Corrosion Resistance
- Rhino Protective Lining

Convenience Options

- Cold Weather Package
- Safety Package
- Snow Plow
- Rotary Broom
- Snow Blower 10,000 CFM
- Remote Monitoring – Telematics
- Radio Remote Control
- Hose Reel
- Heated Mirrors
- Automatic Lubrication System

NEW Option

- Shuttle-Sync

Extended Warranty

- Extended Machine Warranty
- Extended Engine Warranty
- Planned Maintenance

Road/Rail "V" Snow Plow*

- 1-plug connect
- Hands-free plowing
- Joystick controlled
- 6 positional options
- Works on and off the rail
- Landing gear for easy coupling and uncoupling
- Dura Stick paint with Teflon



Road/Rail Maintenance Broom*

- Clears in and around all rail applications
- Rids of snow and debris on tracks, crossings, switches and off rail
- Landing gear for easy coupling and uncoupling
- Heavy duty stainless steel and nylon bristle broom
- No spark polymer bristle option



Introducing Shuttle-Sync

A Revolutionary Multi-Unit Solution*

Shuttlewagon is proud to present Shuttle-Sync, our groundbreaking multi-unit (MU) solution designed to tandem two railcar movers together, delivering ~1.9times the tractive effort of a single railcar mover. This innovation mirrors the efficiency of locomotives but with the added flexibility and cost-effectiveness of using railcar movers, setting a new standard in the railcar moving industry.

How does Shuttle-Sync work?

- Shuttle-Sync’s primary unit controls both units from either the cab or Cattron remote control.
- Shuttle-Sync communication between the 2 Shuttlewagons is through the SAE-J1939 CAN communication protocol.
- Shuttle-Sync works on 2018 models or newer.
- Shuttle-Sync can only work with similar Shuttlewagons in terms of Engine, Transmissions and Gearing.
- Commander: SWX315 & SWX420 can work together in any 2-unit combinations. SWX525 can only match with itself.

***NXT318, NXT423, NXT527, NXT 631 launching Shuttle-Sync late 2024.**



Model 1	Model 2	Total TE
SWX315	N/A	19,600
SWX420	N/A	24,100
SWX525	N/A	29,300
NVX5025	N/A	36,000
SWX315	SWX315	37,240
NVX6030	N/A	39,900
SWX315	SWX420	41,515
NVX7035	N/A	43,000
SWX420	SWX420	45,790
SWX525	SWX525	55,670
NVX8040	N/A	59,400
NVX5025	NVX5025	68,400
NVX6030	NVX6030	75,810
NVX6030	NVX7035	78,755
NVX7035	NVX7035	81,700
NVX6030	NVX8040	94,335
NVX7035	NVX8040	97,280
NVX8040	NVX8040	112,860

Shuttle-Sync represents a significant leap forward for Shuttlewagon and the railcar mover industry. By combining the power of two units, it offers an unprecedented level of tractive effort, akin to locomotive capabilities but with the added benefits of flexibility, cost-effectiveness, and safety. This innovation is poised to transform the efficiency and effectiveness of railcar moving operations, solidifying Shuttlewagon's position as a leader in railcar moving solutions.

Shuttle-Sync Main Feature Categories

Requirements

- 2 Shuttlewagon units with Shuttle-Sync installed.
- Both connected units must be model year 2018 or newer.

Enhanced Tractive Effort

- Shuttle-Sync harnesses the power of two railcar movers, effectively combining their strengths to achieve significantly higher tractive effort. This capability is particularly beneficial for heavy-duty operations, providing the power of a locomotive with the agility of a railcar mover.

Streamlined Operations

- Shuttle-Sync offers increased mobility and flexibility over a locomotive. Shuttlewagons are bimodal and can travel on both rail and roadways, providing economical and efficient operations. Shuttle-Sync takes this a step further by offering enhanced power without sacrificing maneuverability.

Cost-Effectiveness

- Shuttle-Sync offers a more economical alternative to traditional locomotives, which are often expensive to purchase and maintain. Shuttlewagon Mobile Railcar Movers are known for their cost-effectiveness in terms of lower fuel consumption, fewer crew to operate, and lower maintenance costs.
- Shuttle-Sync is designed to offer these same economic advantages, reducing operational costs while boosting efficiency.

Flexibility

- Tandem Shuttle-Sync can be operated from the primary cab or remote control.
- The same controls are available in Shuttle-Sync mode or as a single Shuttlewagon.

Performance

- Has the highest Tractive Effort of any Road/Rail Railcar Mover.

Safety

- Utilizes not only the power of the 2 Shuttlewagons, but also the combined railcar mover braking as well as the combined compressed air of both railcar movers for train braking.
- Camera view from both Shuttlewagons is visible from the primary Shuttlewagon.
- Near-immediate vehicle response with low latency ~250ms delay between vehicles to allow for safe control of both vehicles.
- All secondary vehicle operator interfaces are locked out when in Multi-Unit mode except vehicle braking and E-Stop.



Shuttle Track Mobile Equipment Manager

Manage your Shuttlewagon from your web browser

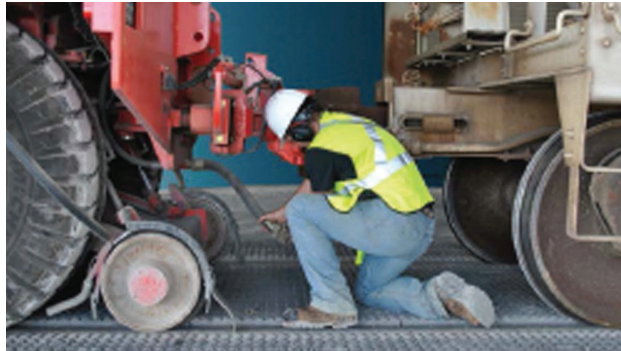


Get all the information you need to monitor and manage your Shuttlewagon while it's on the move or in use, all on a single screen, accessible anytime from any computer or device with an internet connection.

- **Dashboards** - What information matters most to your business? Customize your Shuttle Track dashboard for quick access to Shuttlewagon location and runtime data.
- **Reports** - Replace manual processes and paperwork with electronic reporting tools that you can access anytime, from anywhere to make better business decisions with insight into actual Shuttlewagon usage.
- **Geo-Fencing** - Be notified when your Shuttlewagon leaves a designated geographical area to eliminate losses due to theft.
- **GPS Tracking** - Get real-time GPS location data for your Shuttlewagon, displayed on the familiar Google Maps interface. Bread crumb reports show a historical view of asset locations.
- **Alarms** - Receive alerts by text or e-mail when pre-defined conditions are met (Excessive runtime, machine parameters, or Shuttlewagon movement into or outside of the geo-fence). Notifications may be escalated and/or sent to multiple contacts.
- **Runtime** - Know how long your Shuttlewagon was running to decrease maintenance costs and improve reliability.

The Safer Choice

Offering more standard safety features than any other brand.



It's important to keep safety measures top-of-mind, and to review best-practices frequently in order to avoid dangerous workplace incidents.

- Integrated Safety
- 360 degree view from cab
- Full-width pass through cab on every model
- Visual & audible warning alarms
- 180 degree rotating console
- Console slide for operator reach
- Rail mode; operate from any side of machine
- Automatic Engine Shutdown
- Telematics with shock-load/impact monitoring
- Overhead interior mirrors *
- Surround camera system
- 360 degree perimeter camera package *
- Digital Video Recorder (DVR) *
- Vigilance control *
- Dead man switch *
- Industry leading Red Zone space
- Fewest pinch points across brands
- Easily accessible service points
- No need to block machine during maintenance
- 13 exterior lights
- Groundman crossover platform
- Anti-skid deck plate
- Wide top-to-bottom, accessible ladders
- FCC licensed 450mHz remote control*
- Switchman Remote Emergency Shutdown*
- Infinite Range Train Air Brakes for maximum brake control
- Service Safety - No heavy "weight transfer" coupler beams or folding tires creating dangerous pinch points
- Derail Prevention – No lifting rail car off the center pin
- True 360° Visibility with or without cameras
- Operator Safety - No cramped space for operators connecting train air hoses
- Training - Included with every machine

*Aftermarket installation available

Parts

We ship your parts same day and are always following trends to ensure we have the right inventory stocked at all times.



Update your machine with new aftermarket parts

Shuttlewagon and our dealers provide customers with a wide range of services and parts for all makes and models of mobile rail car movers. We know the importance of fast-turnaround on parts and shop services so you, our customers, can keep business moving.

- Parts for all makes and models
- Service manuals
- Operations manuals
- Parts books
- OEM parts for all Shuttlewagon units
- Machine Troubleshooting
- On-site customized training and install

Service

Nationwide service through Shuttlewagon's dealer network or with our factory-trained technicians who work on all makes and models of railcar movers and other industrial equipment.

- 24-hour field service
- On-site operator training
- Field and shop services
- Customized preventative maintenance agreements
- Emergency repairs
- Scheduled maintenance
- Coverage programs
- Comprehensive vehicle inspection
- Field install add-on options
- Training refresher courses
- Customized training and manuals
- One-on-one/On-site operator training
- Field and shop services
- Customized PM



We deliver the help you need, when you need it most.



Contact:

Reach out to your local dealer for Shuttlewagon field service, or if you are not in a designated dealer territory, please email ShuttlewagonSupport@Wabtec.com.

CONTACT SHUTTLEWAGON AND

**MAKE YOUR
MOVE TODAY!**



Outside the United States, Shuttlewagon, Inc. is partnered with key distributors in Canada and Mexico as well as representatives and agents elsewhere.



Contact

8701 Elwood Avenue
Suite 300
Kansas City, MO 64132
Call: 1.816.767.0300
Email Sales: ShuttlewagonSales@Wabtec.com
Email Support: ShuttlewagonSupport@Wabtec.com
shuttlewagon.com



Proudly made
in the USA.



SHUTTLEWAGON
MOBILE RAILCAR MOVERS

